



# Board of Supervisors The Novel Coronavirus (COVID-19)

June 16, 2020

# Briefing topics

- County-wide demographic data
- Santa Maria demographic survey results
- CDPH Monitoring Project status
- Information request from Board of Supervisors



# County-wide Demographic Data

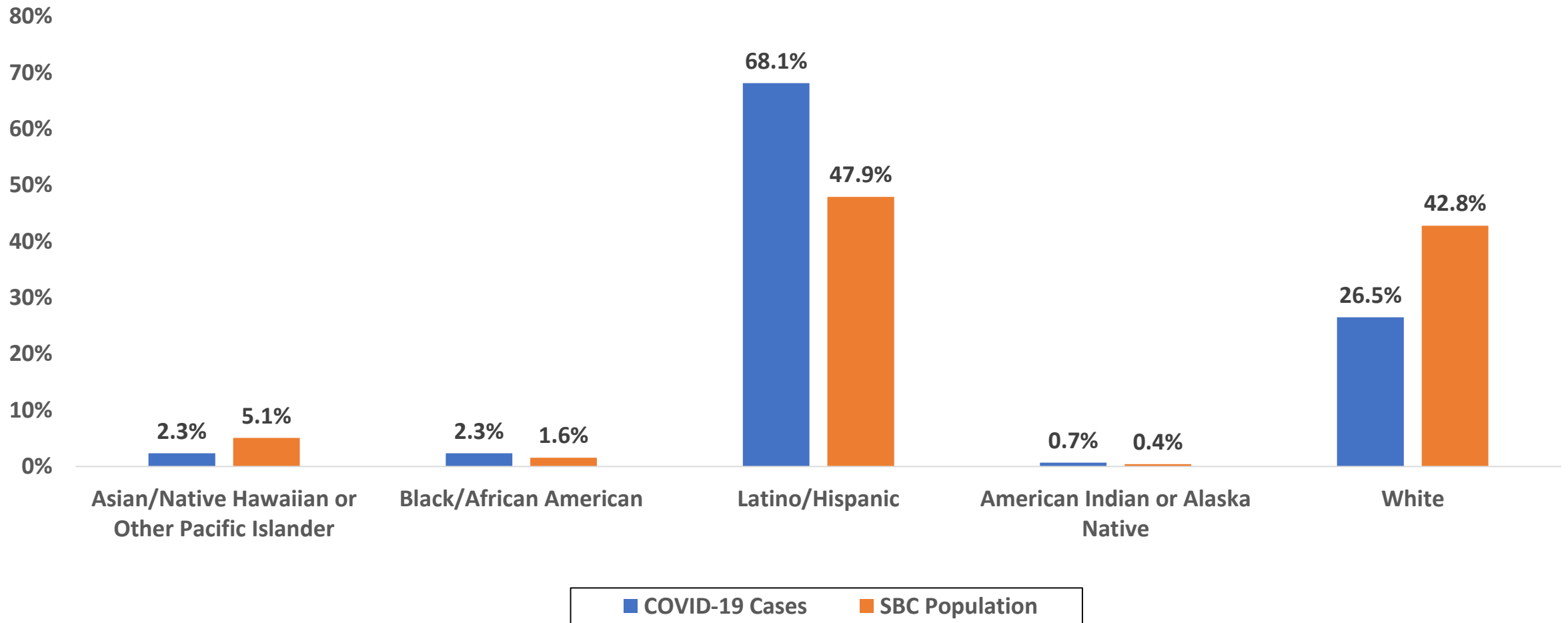
**Table 1: Confirmed Community COVID-19 Cases by Race/Ethnicity, Age-Adjusted Rates, through May 8th (N=443\*)**

Race/Ethnicity	N	%	Age-Adjusted Rate per 100,000	95% CI	SE	RSE
Asian/Native Hawaiian or Other Pacific Islander	7	2.3%	--	--	--	--
African American	7	2.3%	--	--	--	--
Latino/Hispanic	203	68.1%	94.8	81.5-108.0	6.8	7.2%
American Indian or Alaska Native	2	0.7%	--	--	--	--
White	79	26.5%	37.5	28.9-46.1	4.4	11.7%

\* 145 Missing or Unknown Race values are not included in the table; Rates for Asian/Native Hawaiian or Other Pacific Islander, African American, American Indian were not included due to an RSE over 30% and small cell size.



# Confirmed COVID-19 Community Cases by Race/Ethnicity vs SBC Race/Ethnicity Estimates\*



\*145 of the 443 confirmed COVID-19 community cases have unknown or missing race/ethnicity and not included in the chart; SBC population estimates by race/ethnicity per California Department of Finance, 2020.

# Confirmed Cases

Table 2: Confirmed Community COVID-19 Cases by Census Tract Poverty Level, Age-Adjusted Rates through May 8th* (N=443*)						
Area Poverty	N	%	Age-Adjusted Rate per 100,000	95% CI	SE	RSE
<10% area poverty	188	44.8%	97.4	83.4-111.5	7.2	7.4%
10% to <20% area poverty	132	31.4%	93.7	77.6-109.8	8.2	8.8%
20% to <30% area poverty	88	21.0%	141.1	110.7-171.6	15.5	11.0%
30% to 100% area poverty	12	2.9%	--	--	--	--
* 23 cases of the 443 did not have census tract or poverty level data and therefore not presented in this table.						



# Hospitalizations

**Table 4: Community COVID-19 Cases with Race/Ethnicity\* Hospitalized through May 8th**

Race/Ethnicity	Count	% of Hospitalizations
Asian/Native Hawaiian or Other Pacific Islander	<5	--
African American	<5	--
Latino/Hispanic	50	56.2%
American Indian or Alaska Native	<5	--
White	25	28.1%
Unknown	10	11.2%
Total	89	100%
* Ever hospitalized and COVID positive		



# Deaths

**Table 3: Community Confirmed COVID-19 Deaths by Race/Ethnicity, Age-Adjusted Rates, through May 8th\* (N=7)**

Race/Ethnicity	N	Non-Missing %	Age-Adjusted Rate per 100,000	95% CI	SE	RSE
Asian/Native Hawaiian or Other Pacific Islander	<5	--	--	--	--	--
African American	<5	--	--	--	--	--
Latino/Hispanic	5	71%	--	--	--	--
American Indian or Alaska Native	<5	--	--	--	--	--
White	<5	--	--	--	--	--

\* Data was extracted from Vital Records Death Certificates where COVID-19 was listed as an underlying cause of death.



# Summary Findings

- COVID-19 confirmed cases and deaths are higher among Latinos than among Whites
  - When hospitalized, acuity and length of stay is also higher in Latinos
- Clear association between lower incomes and increased rates of testing and confirmed cases
- More persons with lower income are seeking out testing and are testing positive
- The initial COVID-19 cases interviewed by PHD mostly had private insurance
  - May indicate that those with public insurance and those who are uninsured are not being tested
- Low death count in Santa Barbara County



# Strategies

1. Ensure access to testing for highly impacted communities
2. Integrate testing with care coordination for highly impacted communities
3. Facilitate access to other supportive resources
4. Continue to support local and national policies and alleviate the burden of this disease and promote more equitable investment in our communities
5. Provide more inclusive data collection, reporting and deeper analyses to understand the unique risk and preventive factors among highly impacted communities
6. Contact tracing and tracking
7. Strengthen and tailor communication strategies to increase language access and conduct more robust outreach, education, and community engagement



# PHD Next Steps

1. Ensure those at high-risk for COVID-19 have access to health insurance, primary care, and safety net programs
2. Continue to expand testing to communities at-risk for COVID-19



# Additional Information Available in Report

- Percent of Confirmed COVID-19 Community Cases by Race/Ethnicity and Age Group
- Confirmed COVID-19 Community Cases by Census Tract Poverty Level, Age-Adjusted Rates
- Confirmed COVID-19 Community Patients Hospitalized by Race/Ethnicity\* and ICU Admissions
- Length of Stay for Hospitalized Community COVID-19 Positive Patients Who Have Been Discharged, by Age Group
- Percent of Lompoc FCI COVID-19 Incarcerated Cases by Race/Ethnicity and Age Group





# Santa Maria (SM) Confirmed Cases

---

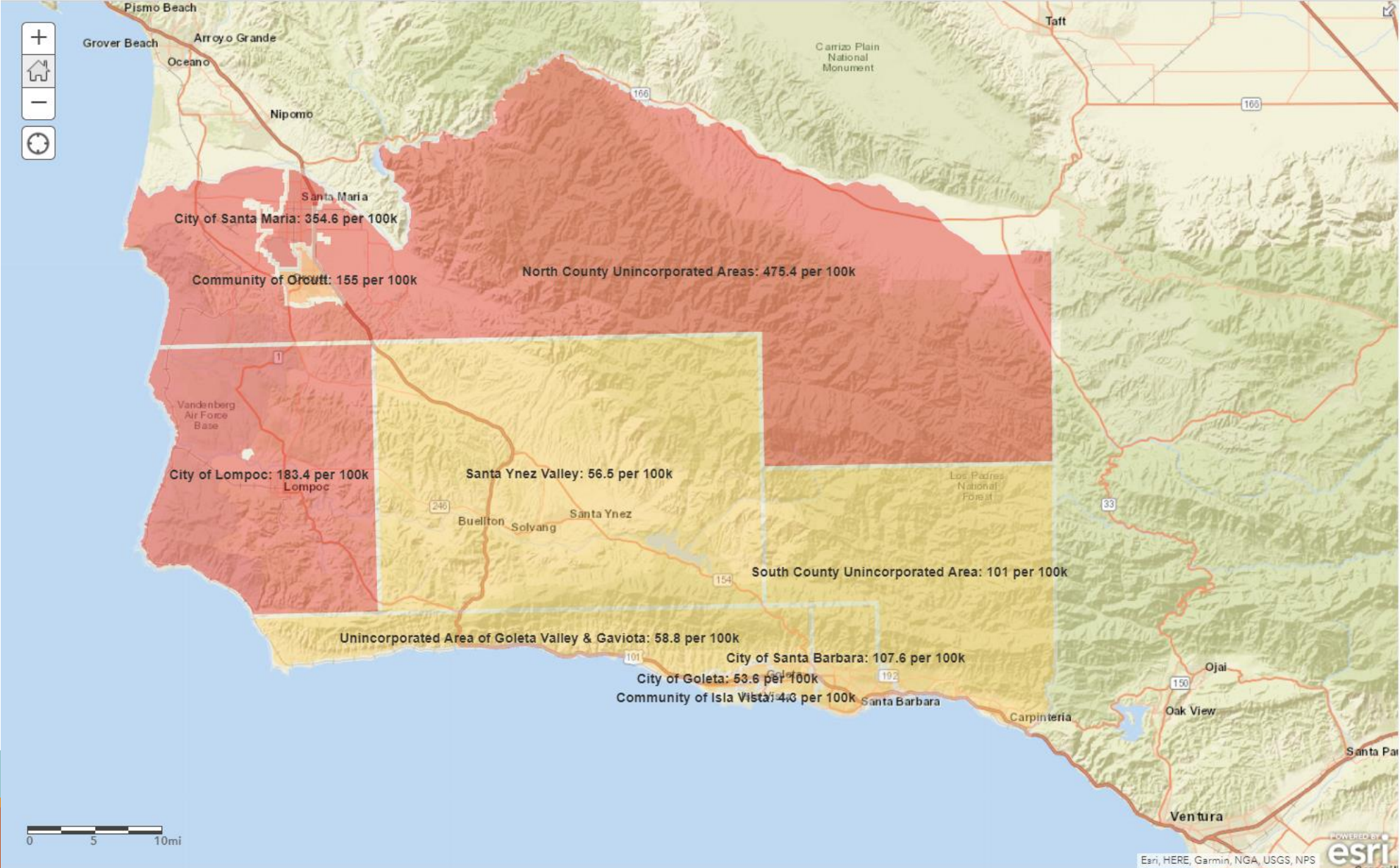
**Data as of May 27, 2020**

# Background

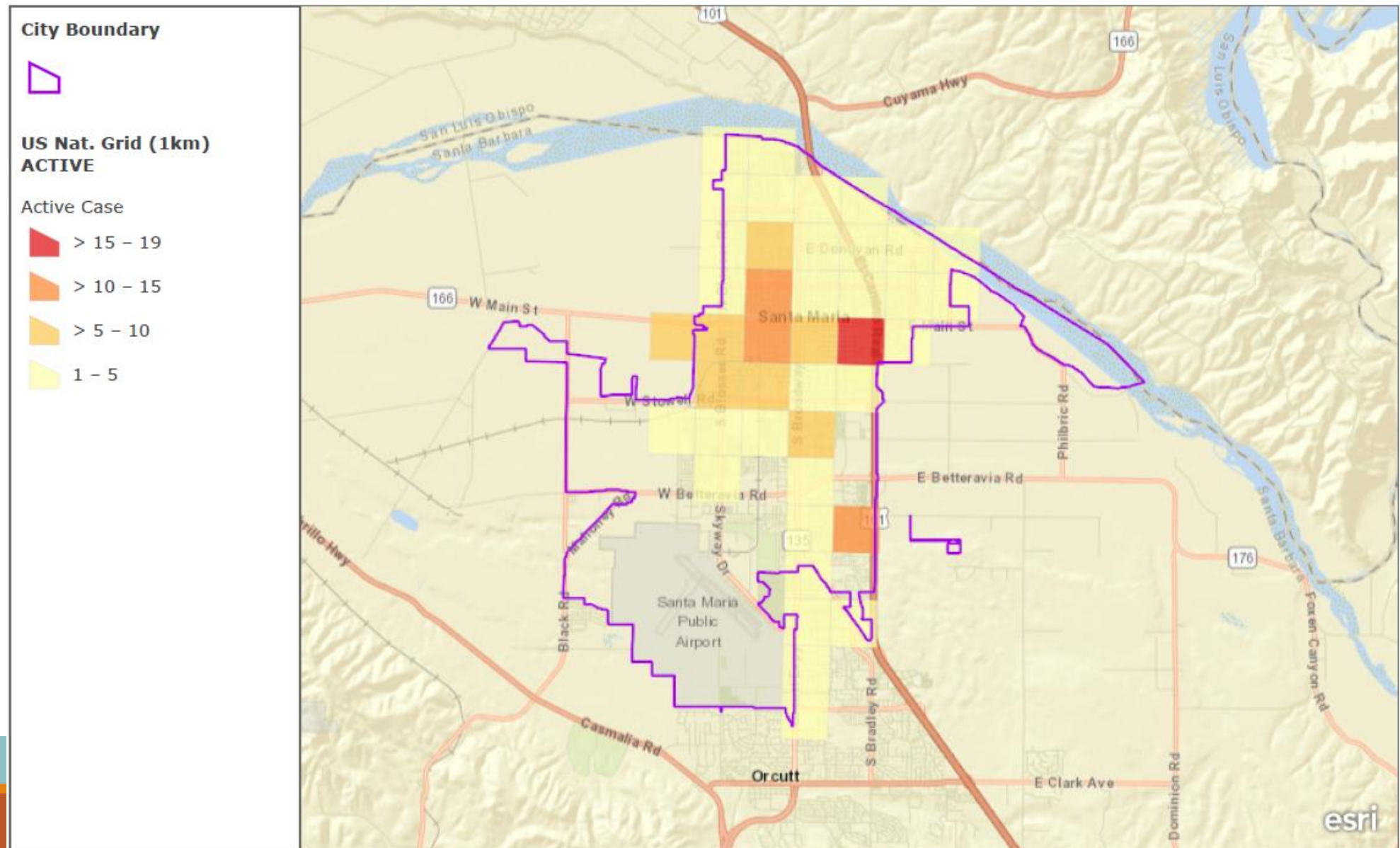
- The first cases of COVID-19 in Santa Barbara County were identified in North County
- Over the past several months, Santa Maria has seen elevated rates of COVID-19
- In order to better understand the situation in Santa Maria, the Santa Barbara County Public Health Department analyzed available data on confirmed cases



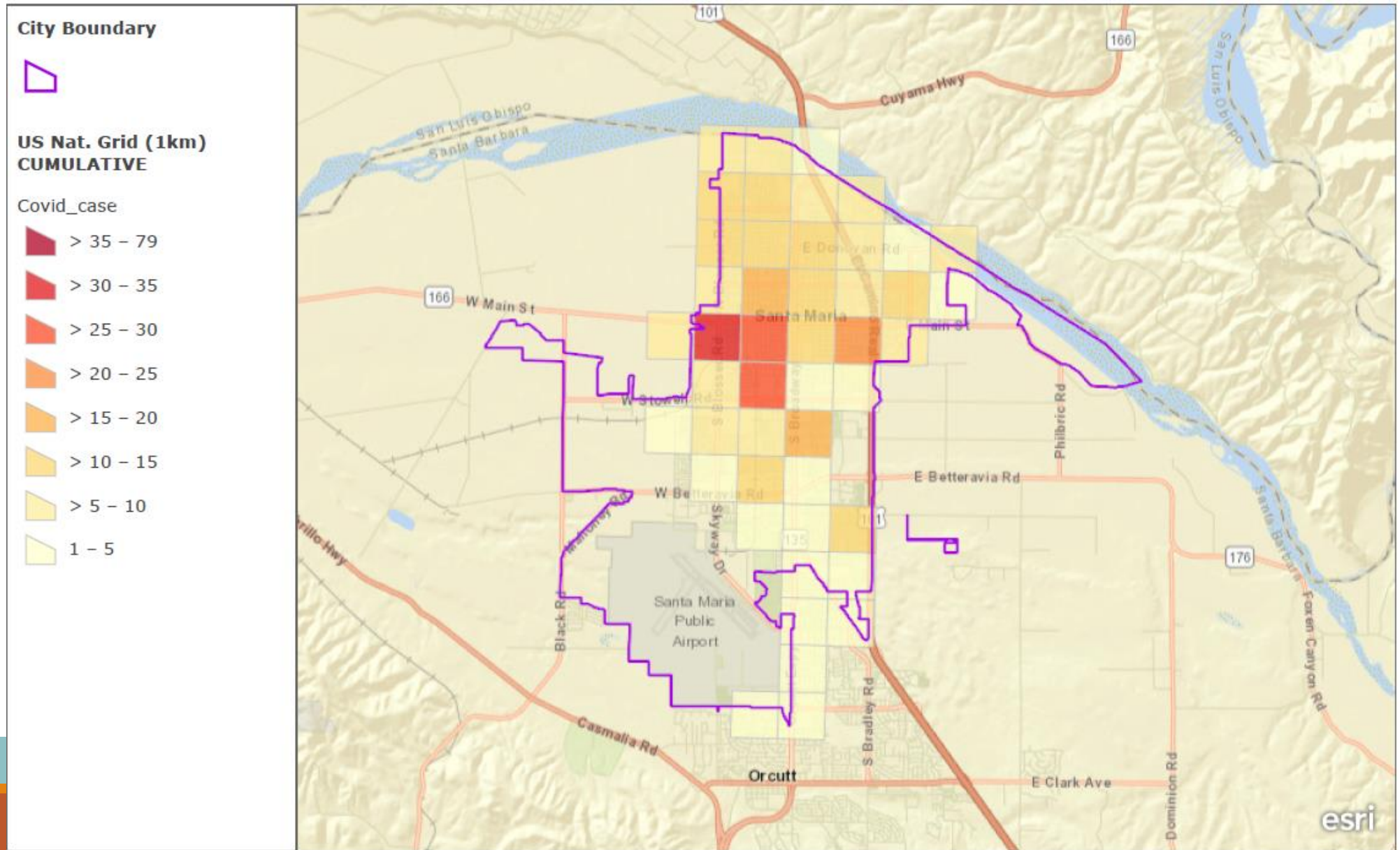
# Cumulative Case Rate



# Active cases per 1 sq km



# Cumulative Cases per 1 sq km



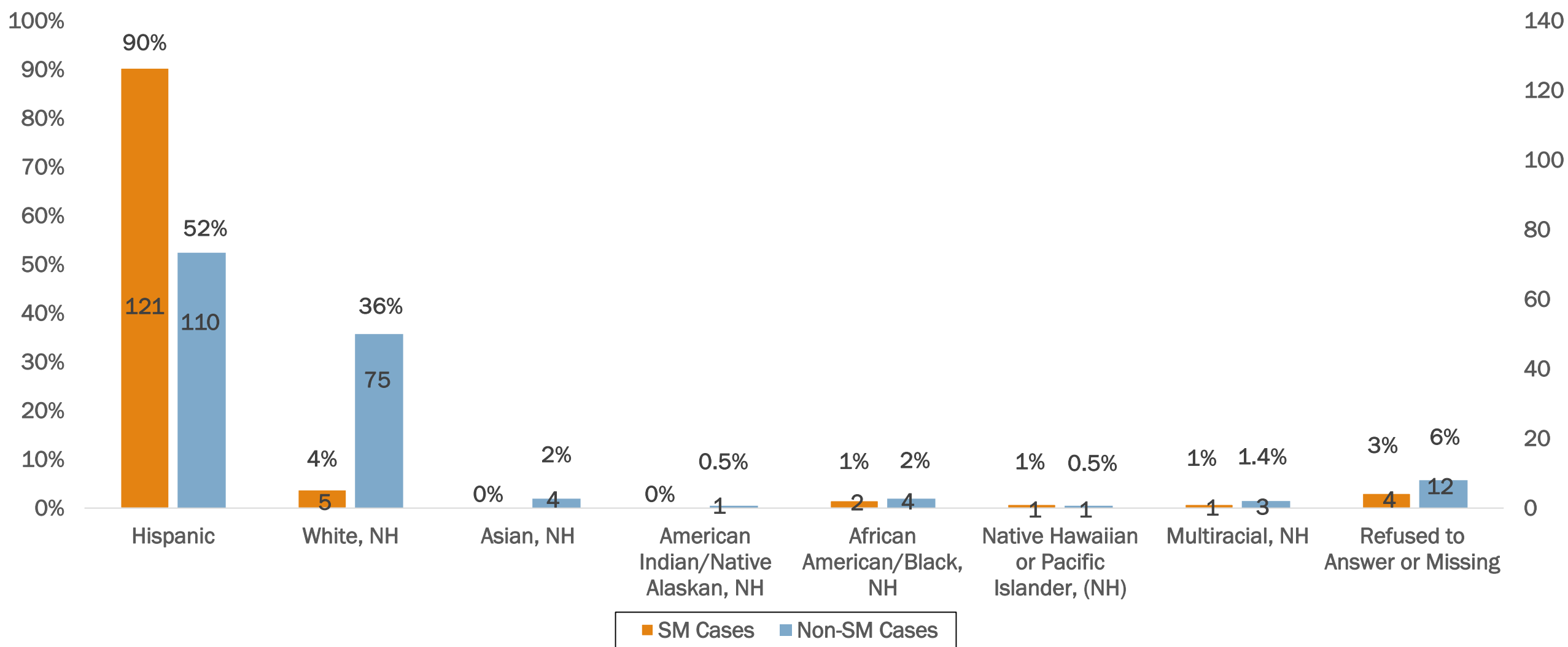
# Data Overview

- Data source is cases who agreed to be interviewed
- Total Confirmed Cases with demographic data (excluding inmates): N= 344
  - Total Confirmed Cases with GIS Region Santa Maria (SM Cases): n=134
  - Total Confirmed Cases with Other GIS Region (Non-SM Cases): n=210

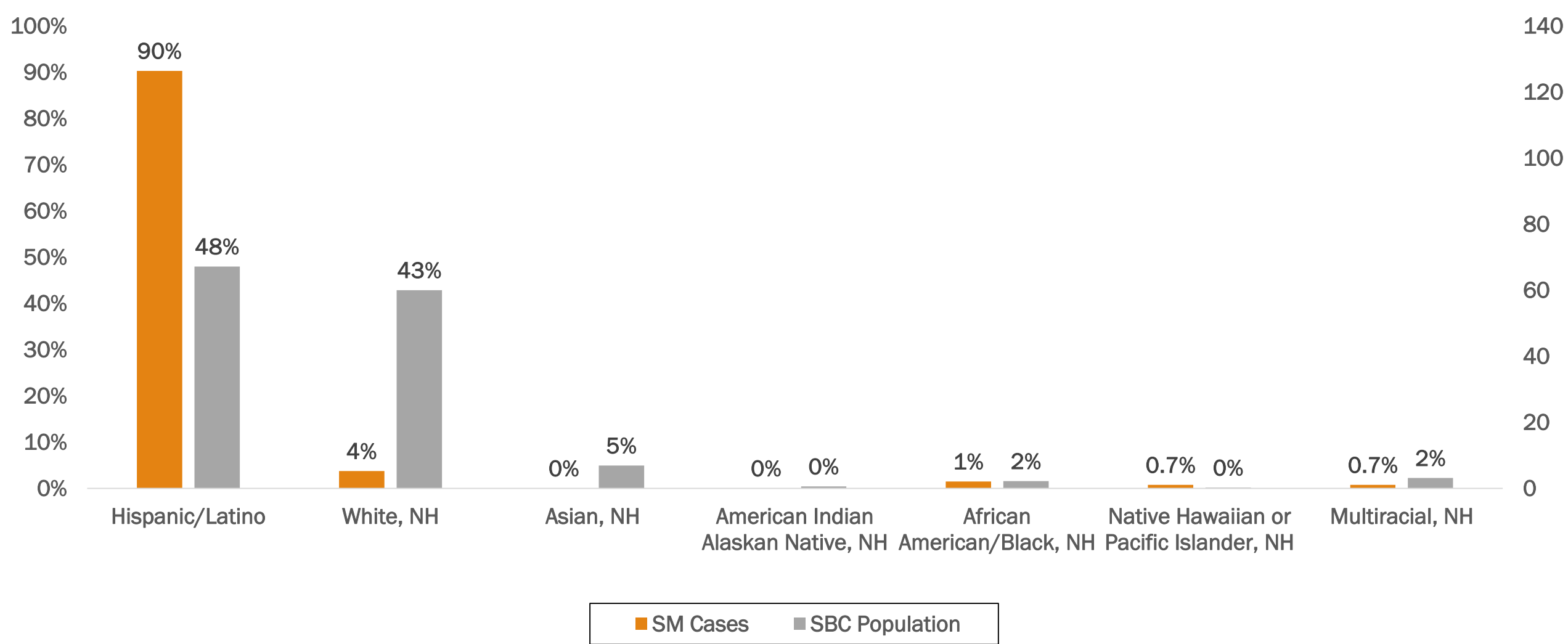


# Race/Ethnicity of Cases

(SM Cases, n=134 vs Non-SM Cases, n=210)

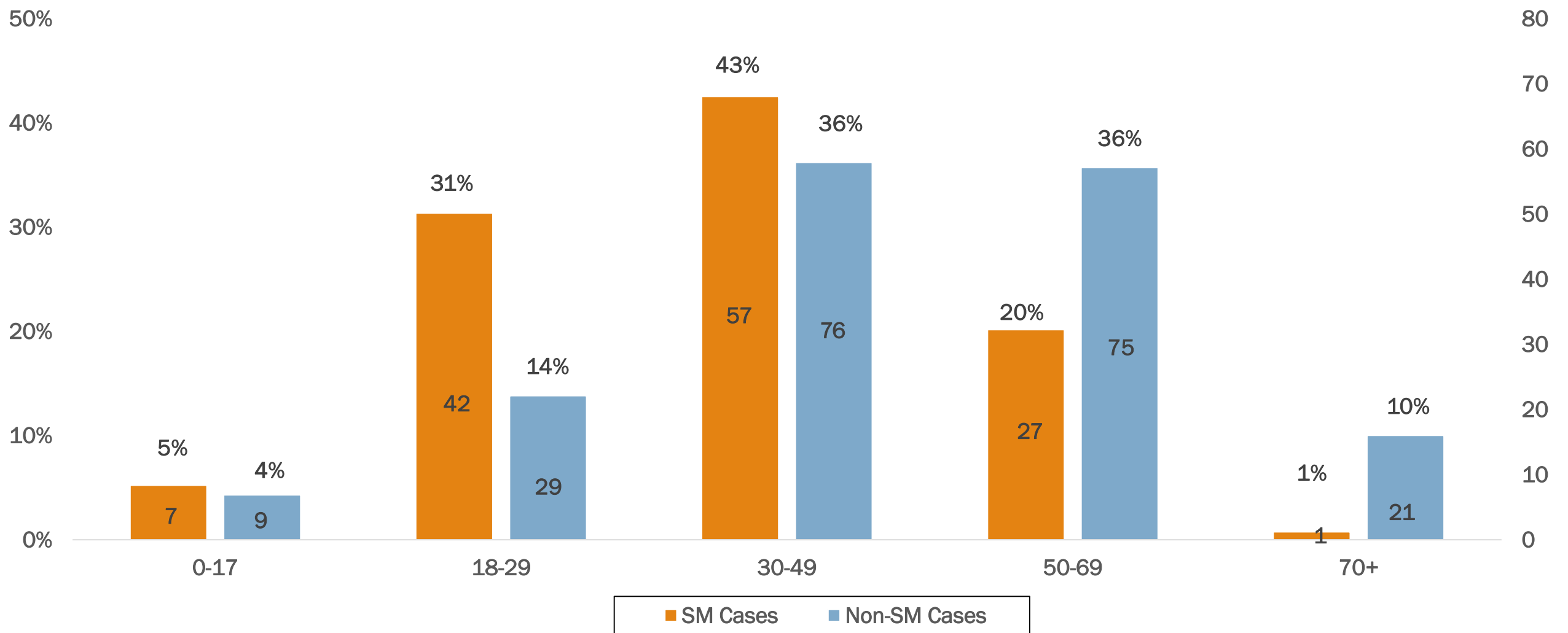


# Race/Ethnicity of SM Cases vs Population



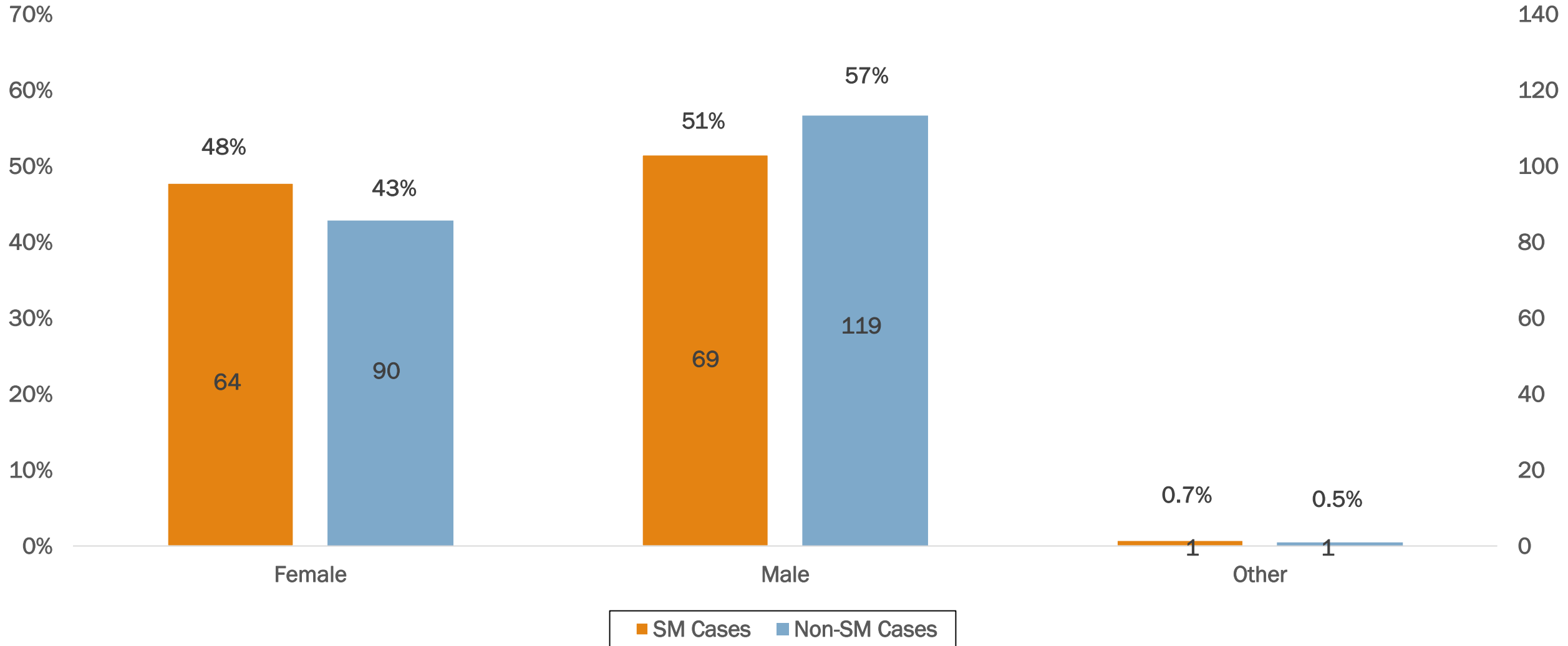
# Age Comparison

(SM Cases, n=134 vs Non-SM Cases, n=210)



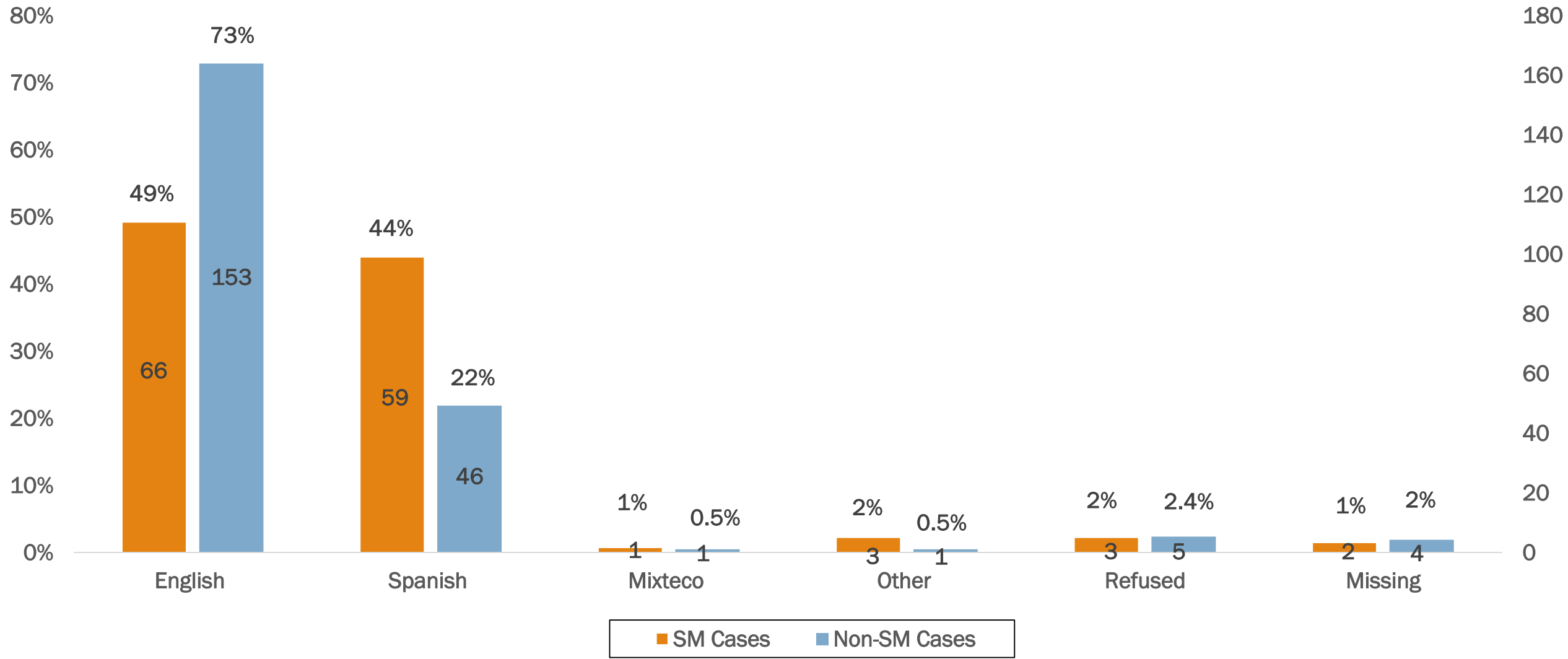
# Gender Comparison

(SM Cases, n=134 vs Non-SM Cases, n=210)



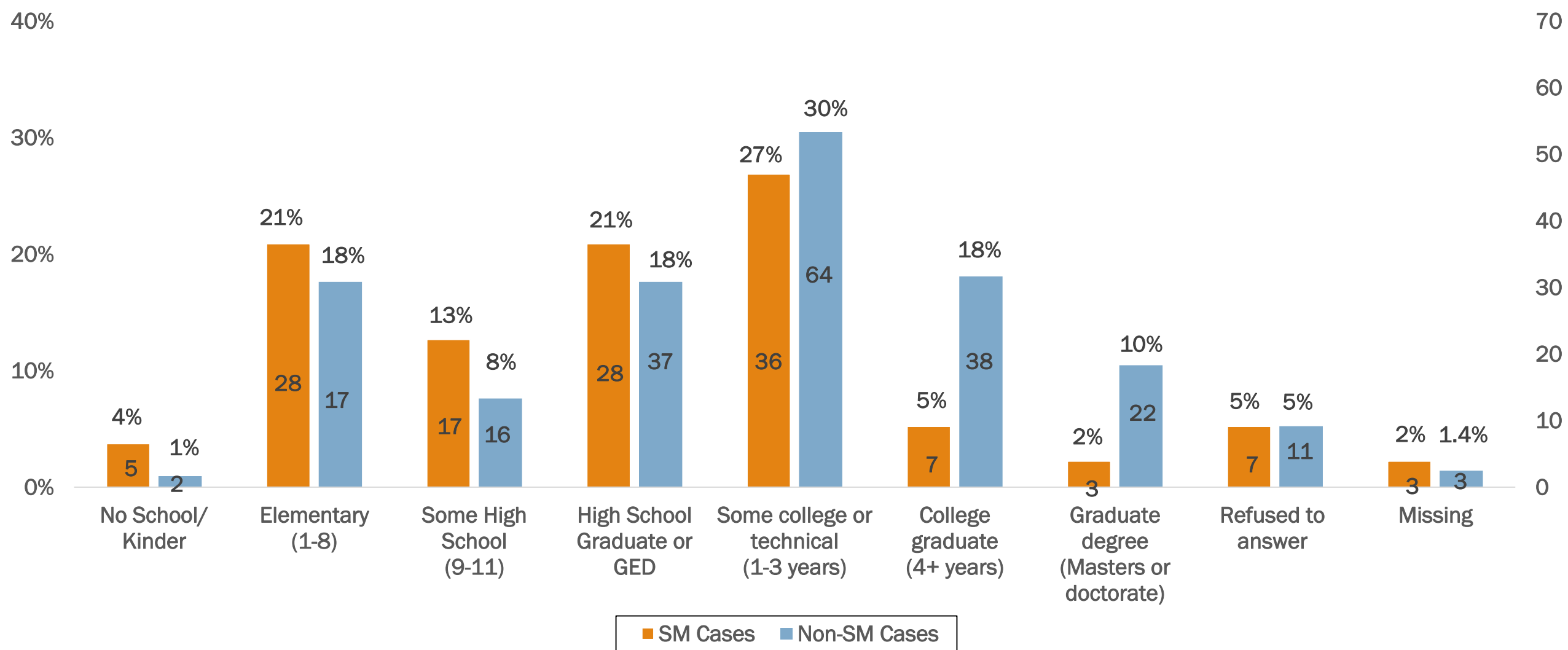
# Primary Language Comparison

(SM Cases, n=134 vs Non-SM Cases, n=210)



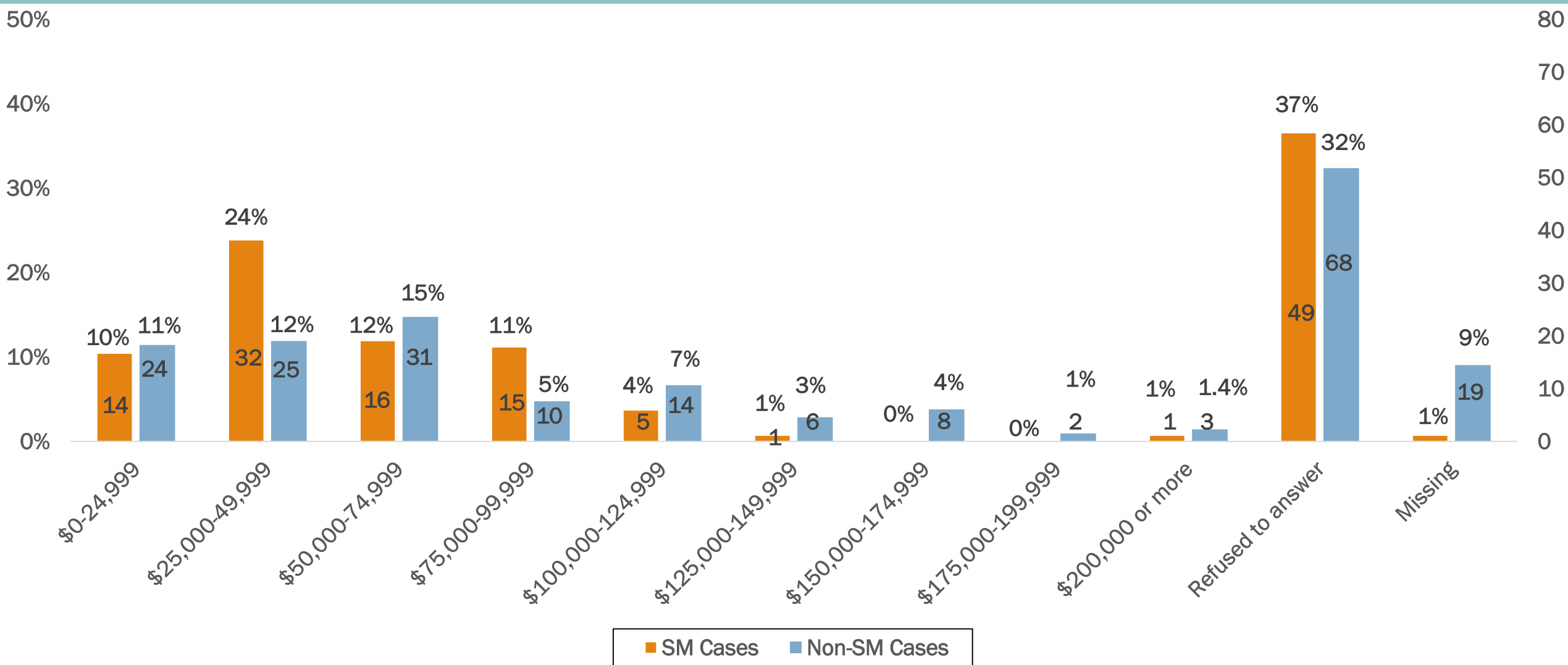
# Education Level Comparison

(SM Cases, n=134 vs Non-SM Cases, n=210)



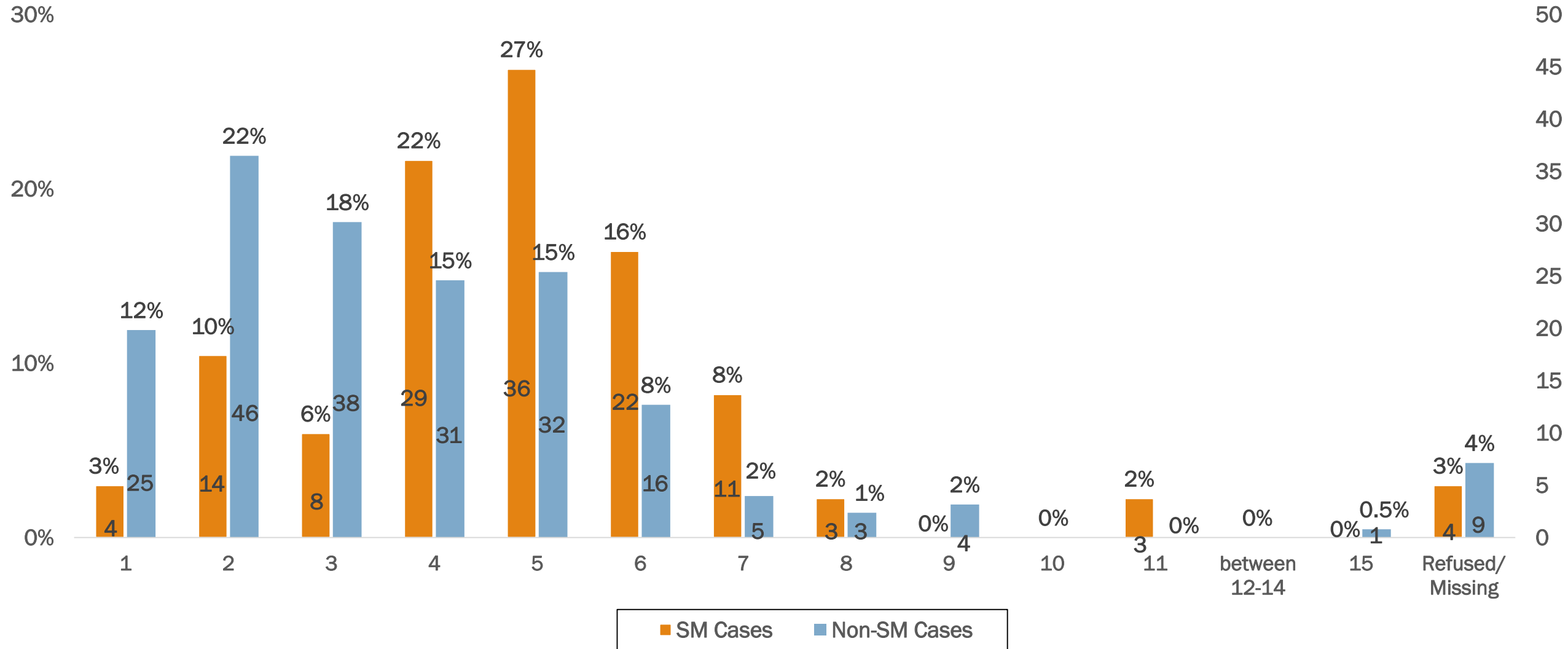
# Annual Household Income Comparison

(SM Cases, n=134 vs Non-SM Cases, n=210)



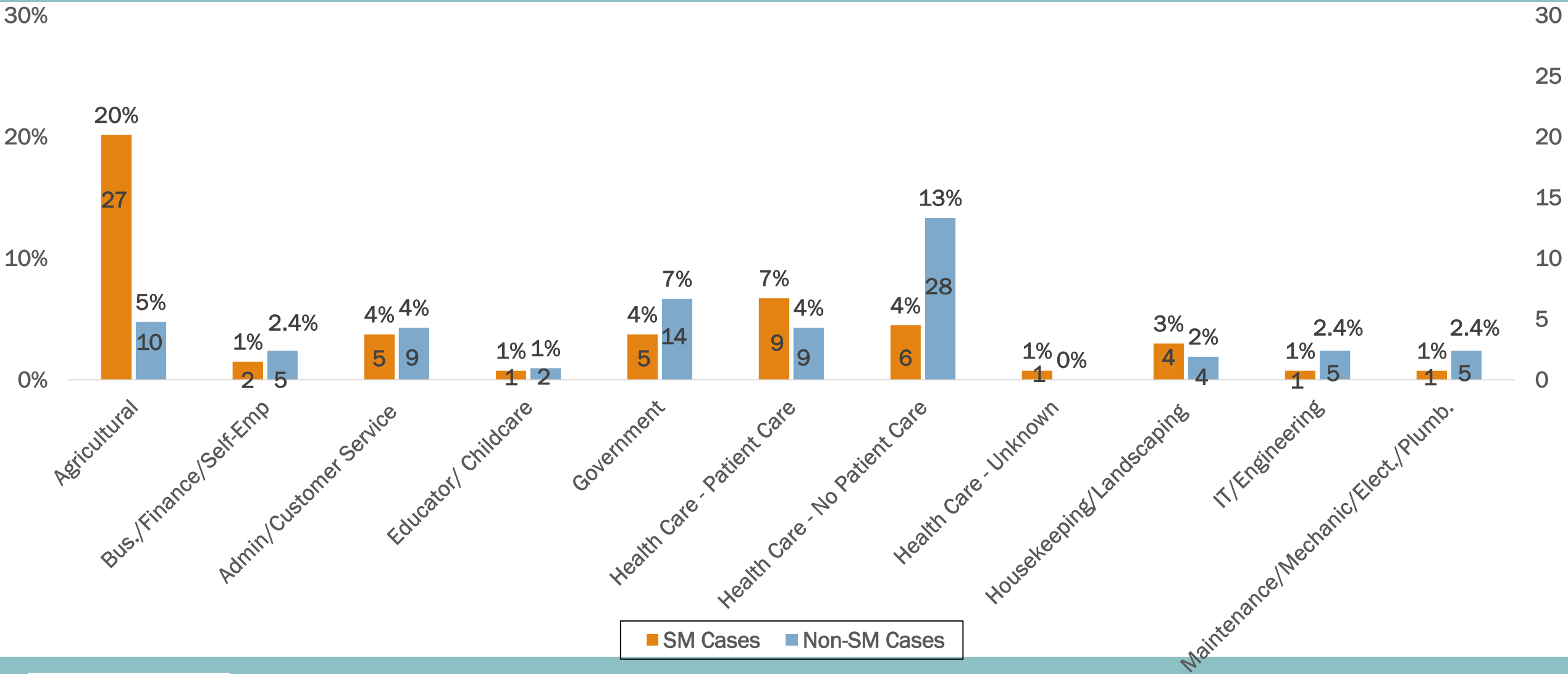
# Household Size Comparison

(SM Cases, n=134 vs Non-SM Cases, n=210)



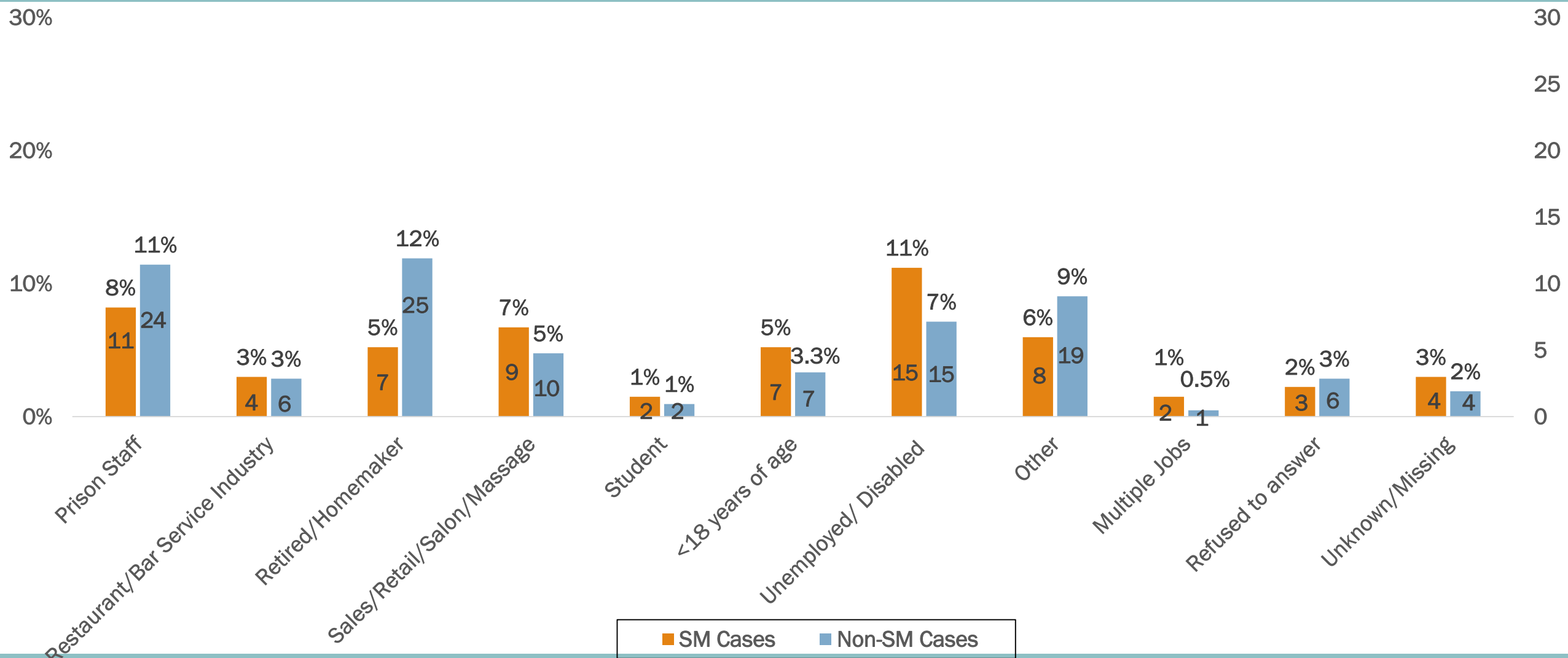
# Occupation Comparison Part 1

(SM Cases, n=134 vs Non-SM Cases, n=210)



# Occupation Comparison Part 2

## (SM Cases, n=134 vs Non-SM Cases, n=210)



# Additional Occupation Information

- The previous slides showed occupation data from cases, who agreed to be interviewed
- Another source of data is from the Disease Control investigation staff who speak with nearly every case
- The following two slides will present information collected by investigators



# Additional Occupation Information

Community Cases as of 6/11/20	County-wide	North County	Santa Maria/ Guadalupe/ Orcutt
Total Number of Agricultural Workers	142	139	131
Total Number of Cases ages 18-69	773	582	505
% of Agricultural Workers	18.4%	23.9%	25.9%

# Key Data Findings for Santa Maria Cases

- Insurance coverage: 73% yes & 24% no
- Heard about COVID 19: 87% from TV news
- Knowledge about COVID 19: 27% somewhat; 34% moderate  
20% Extremely knowledgeable
- Knowledge of handwashing: 92% understood
- Knowledge of social distancing: 70% understood
- Able to practice social distancing at home: 72% yes & 24% no
- Able to practice Social distancing at work: 52% yes & 21% no

# Findings

- Latinos/Hispanics in Santa Maria represent a disproportionately higher number of cases compared to their representation in Santa Barbara County population and in comparison to Non-SM Cases
- When compared to Non-SM Cases, SM Cases:
  - have a higher percentage of household size between 4 and 7 individuals
  - have more cases who were uninsured and less cases with private insurance
  - are more likely to understand and practice social distancing at home and work

# Next Steps

- Partnership to increase health insurance coverage and access to health care
- Partnership to increase preventive messaging
- Partnership with employers on preventive measures
- Engage Santa Maria community in strategies to decrease spread of disease



# CDPH Monitoring Status

		Elevated Disease Transmission		Increasing Hospitalization	Limited Hospital Capacity	
County	Avg # tests per day (per 100,000 population) (7 day average with a 7 day lag)	Case rate per 100,000 (14 days)	Testing positivity (%) (7 day average with a 7 day lag)	% Change in 3-day avg COVID+ hospitalized patients	% ICU beds currently available	% Ventilators currently available
Threshold	<150 per 100,000	>25 per 100,000	>8%	>10%	<20%	<25%
Threshold for SBC	<675	>112	>8%	>10%	<20%	<25%
SBC Status as of 6/16	99.2	✓	✓	31.50%	✓	✓



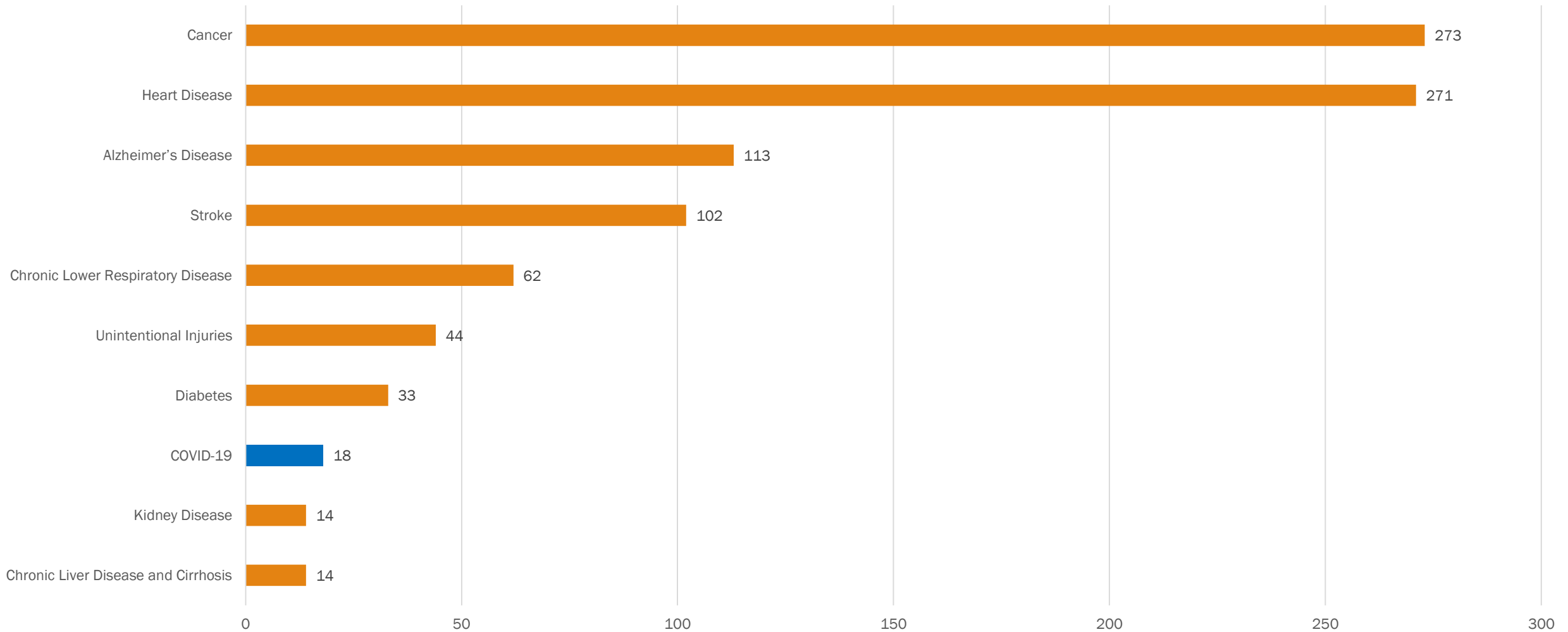
# Information Request from BOS

**Deaths among Santa Barbara County residents from 01/01/2020-05/31/2020 as reported on finalized death certificates**

Cause of Death	Frequency	Age-Adjusted Rate	95% CI	SE	RSE
Cancer	273	48.1	42.3-53.9	3.0	6.2%
Heart Disease	271	44.5	39.1-49.9	2.8	6.3%
Alzheimer's Disease	113	17.3	14.1-20.6	1.7	9.8%
Stroke	102	17.1	13.7-20.5	1.7	9.9%
Chronic Lower Respiratory Disease	62	10.6	7.9-13.3	1.4	13.2%
Unintentional Injuries	44	9.1	6.3-11.9	1.4	15.4%
Diabetes	33	5.7	3.7-7.7	1.0	17.5%
Chronic Liver Disease and Cirrhosis	14	2.5	1.2-3.9	0.7	28.0%
Kidney Disease	14	2.2	1.0-3.3	0.6	27.3%



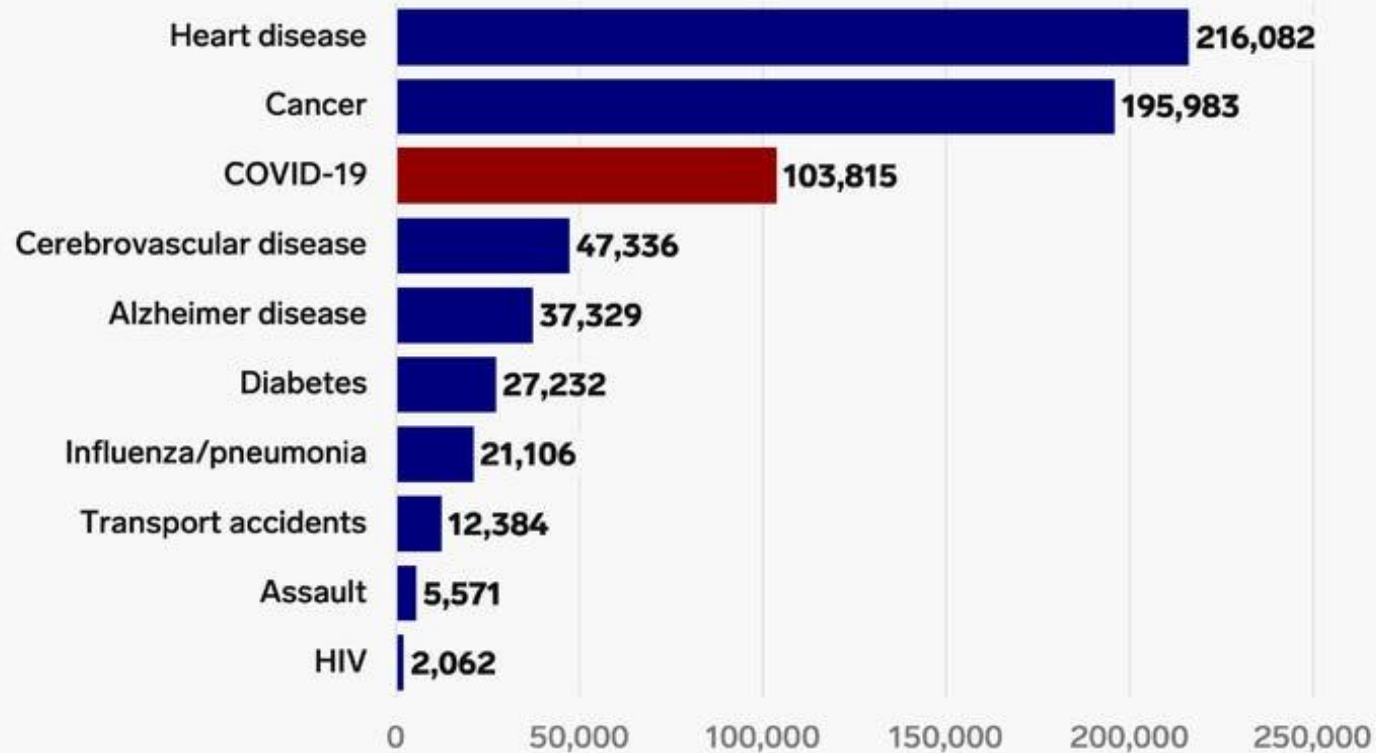
# Information Request from BOS



# Information Request from BOS

## COVID-19 and common US causes of death

Average total deaths between February and May



Note: Non-COVID-19 deaths are the average totals for the four months between February and May in 2014–2018

Source: CDC WONDER; Johns Hopkins University

INSIDER



# Thanks to the Epi Unit!

Stefany Olague

Tina Javanbakht

Joy Kane

Michelle Wehmer

**STRONGER**  
**TOGETHER.**  
**SAFELY APART.**